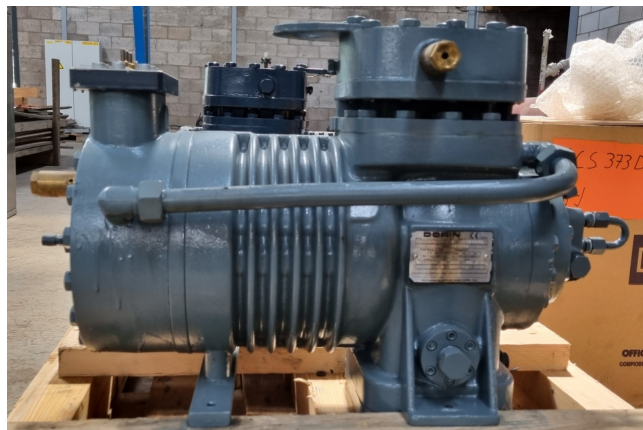


Dorin TCS373-D

Specifications

Brand	Dorin
Type	TCS373-D
Refrigerant	CO2
Refrigerant type	R744
kW at 0°C/+40°C	34,2*
kW at -10°C/+40°C	23,8*
kW at -20°C/+40°C	13,1*
Electromotor Specs	50 Hz - 2900 RPM
Sight Glass	✓
m3 / h	12,6
Remarks	* Capacities refer to transcritical operation conditions and a gas cooler outlet temperature of 40°C
Weight in kg.	155
Sizes	700x350x450 mm (LxWxH)
Stock	1



Description

Used Dorin TCS373-D

New Dorin TCS373-D semi-hermetic reciprocating compressor for CO2. The compressor has a displacement of 12,6 m³/h.

*Why choose for HOSBV? We are not only the largest used refrigeration specialist in Europe, but also, we deliver all equipment including an extensive test, warranty and an industrial cleaning. *Optionally we can also perform a new paint job and arrange the logistics.

